

Customer :

customer

Customer part :

customer part

Comment :

Comment

S1=4.52

S2=4.51

Tmax=461

Tp S2=500.0

PI=0.5

HI=81

Sample =1744.30

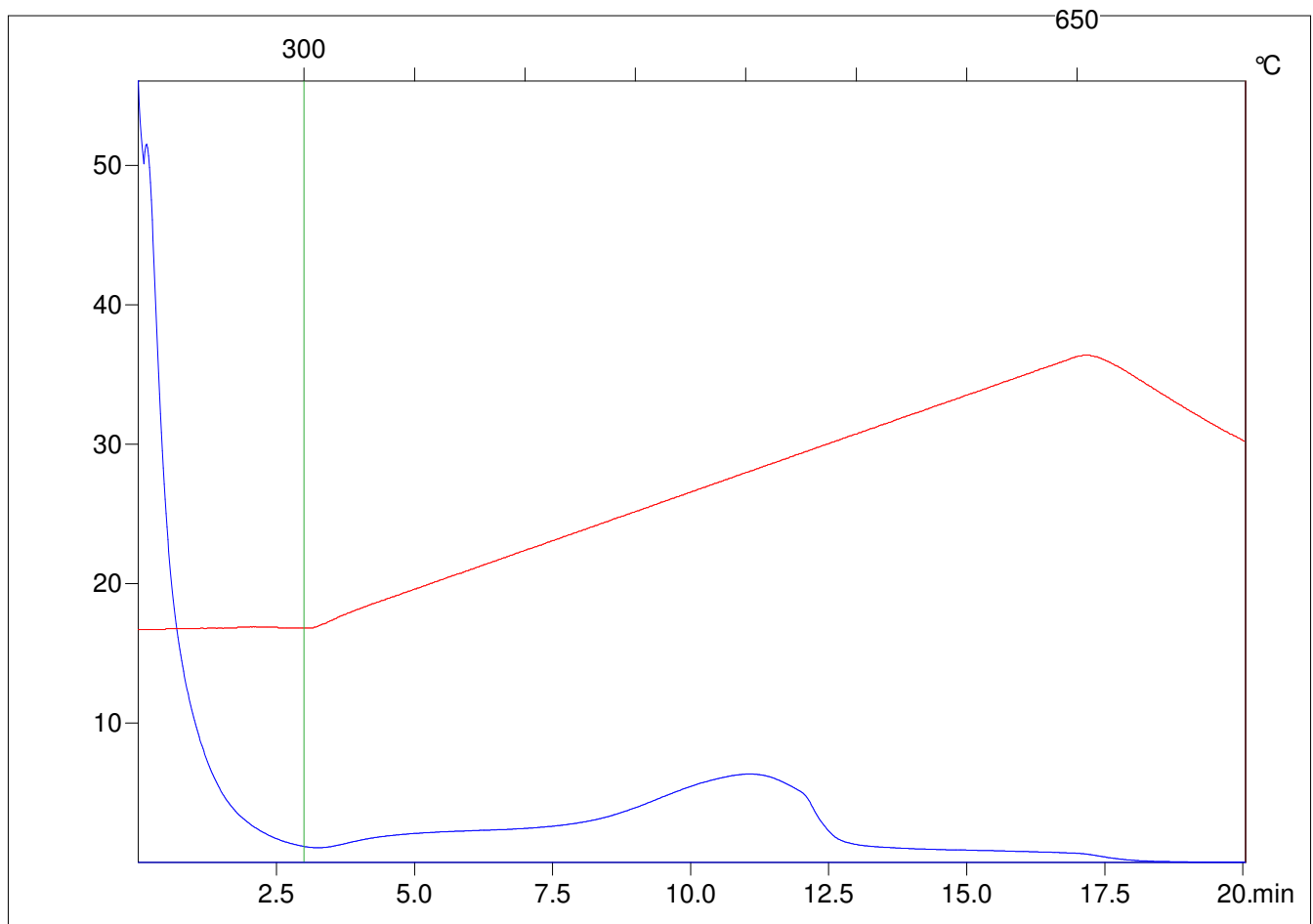
Method =Bulk Rock

Cycle=Basic

KFID(10*9)=1444

Qty =70.6

TOC=5.55



C:\VINC\PK2_1792\PK082.R00 : FID pyrolysis graphic

State Ok

Pyro Status Negative value

Oxi Status Negative value